

INJECTION MOLDING

SIMPLIFIED



SEAY
within
SEAY

Amanda Seay FAACD

1



Create a full smile design model.

2



Create an every-other-tooth model.

3



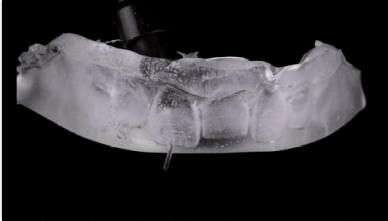
Take a CLEAR impression of the every-other-tooth model.

4



Take a CLEAR impression of the full smile design model.

5



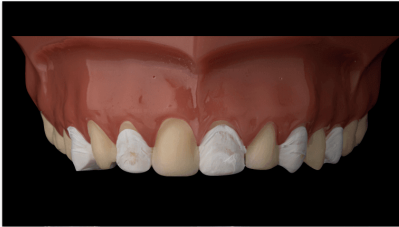
Punch a hole in the every other tooth template in the **DESIGNED TEETH** that you are going to inject.

6



Make sure you clean the tip in between each punch!

7



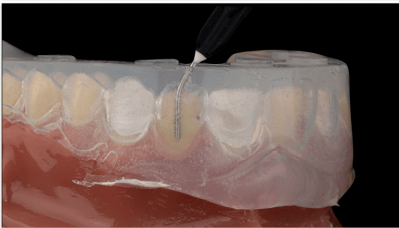
Place teflon tape on the teeth you are NOT going to inject.

8



Etch, bond & light cure the teeth you will be injecting.

9



Complete your **FIRST PASS INJECTIONS** with the every-other-tooth matrix. Make sure to place the tip to the base of the prep and slowly pull up as you inject. Keep the tip buried.

10



Clean your flash and smooth all surfaces and contours prior to moving to the next step.

11



Use diamond strip in "S" curve to smooth interproximals.

12



Place teflon tape on the teeth you have completed so you can begin restoring the remaining teeth.

13



Etch, bond & light cure the teeth you will be injecting.

14



Complete your **SECOND PASS INJECTIONS** with the full smile design matrix. Make sure to place the tip to the base of the prep and slowly pull up as you inject. Keep the tip buried.

15



Clean your flash and smooth all surfaces and contours prior to moving to the next step.

16



Finish and Polish all surfaces.

17



Finish and Polish all surfaces.

18



Finish and Polish all surfaces.



@dramandaseay